

JILLIBY

news



342 Jilliby Road, Jilliby NSW 2259
Ph: 02 4355 1240 **Fax:** 02 4355 1401

jilliby-p.school@det.nsw.edu.au
 www.jilliby-p.schools.nsw.edu.au

TERM 1, MARCH 2019 :: WEEK 8



MONDAY	TUESDAY	WEDNESDAY	THURSDAY	FRIDAY	SAT/SUN
March 18	March 19	March 20	March 21	March 22	March 23/24
			Grandparents & Harmony Day celebration	Short Assembly 2.45pm	
March 25	March 26	March 27	March 28	March 29	March 30/31
				Long Assembly 2.15pm	Sat 30 - School Working Bee
April 1	April 2	April 3	April 4	April 5	April 6/7
Car park upgrade work begins				Short Assembly 2.45pm	

PRINCIPAL'S REPORT

Car Park Upgrade

Much needed work on our car park will begin in Week 10. From Monday the 1st of April - Friday 12th April the main car park will be **closed to ALL traffic**, including pedestrians.

Pick UP & Drop OFF Procedures for: 1st April 2019 – 12th April 2019

To drop students off:	To Pick students up:	To park:
<ul style="list-style-type: none"> Enter the top car park off Little Jilliby Rd Pull over at the drop off point (end of the path) Students exit vehicle on LEFT SIDE of CAR only. Parking will be limited so only remain if necessary. 	<ul style="list-style-type: none"> Enter the turning circle off Little Jilliby Rd Pull over to the left at the collection point (Teacher & Witch Hat) A teacher will send students over & into the car. Proceed around the turning circle and return to Little Jilliby Rd 	<ul style="list-style-type: none"> Enter back car park. Carefully proceed past the drop off & collection point Park Wait until clear to exit.

There will be limited parking spaces available in the back car park so please only use these when necessary. If you are able to pick up your child/ren between 3.10-3.15pm this will help to alleviate congestion in the back car park.

On Track Behaviour

The last couple of weeks we have been focusing on reminding students about SAFE behaviour. At Jilliby Public School students need to

BE IN THE RIGHT PLACE AT THE RIGHT TIME KEEP HANDS AND FEET TO THEMSELVES

For most students at JPS these two rules are easy to follow. They use their resilience when things go wrong and they understand the importance of letting teachers know where they are and ask permission to go somewhere. For some students they have great difficulty remaining calm and in control of their emotions for a variety of reasons. At these times, children may act out their feelings or needs. Thus children engage in challenging behaviour for a reason. The purpose may be getting someone's attention, stopping an activity they don't like, or gaining sensory pleasure — but there is always a reason behind the behaviour.

Whatever the underlying reason for your child acting out, it is your job to help him/her break out of the cycle of bad behaviour. Some individual attention, investigation, and sometimes testing is needed to ensure the right help is given to your child. The earlier the intervention the better the prognosis for your child to un-learn inappropriate behaviour and develop healthy interpersonal skills. This may require teamwork with other family members and/or the school psychologist or staff. Either way, get them help before it leads to more serious behavioural problems. You can break the cycle!

It is not unusual for students to continue to behave inappropriately as the changes require consistent and repetitive application to be learned. You can support our students by talking to them regularly at home about how to manage conflict and disagreement in a socially acceptable manner.

Some useful websites:

<https://beyou.edu.au/>

<https://kidshelpline.com.au/kids>

<https://parentalstress.com.au/home-2/>



PRINCIPAL'S REPORT

New Zealand Tragedy

This distressing incident has been broadcast around the world and has been the main focus of the media for the last few days, as it will remain in the coming days. Events like these inevitably impact our community in many ways. Jilliby Public School regularly revise and practice operating processes to ensure we have systems in place to support student and staff wellbeing.

Our school monitors student wellbeing daily. We need to be particularly focused over the next few weeks. A few of our students may have been exposed to the distressing images published by the media or streamed on social media. We should do all we can to minimise the opportunities for students to view the video of the incident or other related footage online. The content is still circulating on social media and is not suitable for anyone to view. The social media companies are attempting to remove content however students may have access to it and all reasonable steps should be taken to minimise their exposure to the graphic and distressing content.

Students may want to discuss the incident with you and may share opinions and views which is a normal response to a tragic incident like this. It is recommended that you should listen carefully and answer questions based on fact. At times like this our children look to us to make sense of the world.

Our school provides a safe and supportive environment for all staff and students. We are proud that our school embraces diversity, tolerance and acceptance of all and we need to emphasise this at a time like this.

Working Bee

The school will be holding a working bee on Saturday the 30th March between 8am and 3pm. We are looking for helpers for the following tasks - mowing, gardening, cleaning books, packing/organisation, blower/leaves & debris, moving piles of branches and weeding. If you are available to lend a hand on the day please let the school office know.

Years 5& 6 CAMP 'TON O FUN' 2 nights & Years 3&4 CAMP JENOLAN CAVES 1 night

Please remember to send in notes regarding camp so we can finalise arrangements. Once we make definite the arrangements with the venues and bus companies it will be difficult, if not impossible, to change. If you are planning to send your child/ren to camp please let us know ASAP.

Notes were due back yesterday, Monday 18th March, along with a \$50 non-refundable deposit.

HARMONY DAY AND GRANDPARENTS DAY

This Thursday 21st March we are hosting a morning tea for our Grandparents and special people in our student's lives. From 9:30 to 10:30 visitors are invited to work alongside the students in their classrooms. If you have more than one child at the school in different classrooms this will allow time for you to visit them all. From 10:30 until 11:30 there will be a lovely morning tea of scones and pikelets available. Students and special visitors can share this morning tea together outside.

Please ensure all guests sign-in at the office before entering the grounds. (This is a safety precaution and meets OHS requirements)

Mothers Day

The school will be holding a special Mothers Day morning tea on Friday 10th May for all of the wonderful mothers and special people in our student's lives. Please add this event to your diary and look out for more details closer to the date.



PRINCIPAL'S REPORT

2/3/4 Class Teacher

Mr Bof has notified the school that he will now be on leave until the end of term. Unfortunately, this has impacted our arrangements for Parent/Teacher Interviews and for our replacement teacher. We are fortunate to have a very experienced and dedicated teacher on the 2/3/4 class at the moment, however, Mrs Smith is unable to continue after Week 9. Mrs Mansfield will be taking the class for Week 10 and 11. I apologise for this seemingly unfortunate arrangement of having two teachers but it was unavoidable. Mr Bof will arrange new Parent/Teacher Interviews early next term.

Should you have any concerns or questions please do not hesitate to make an appointment to see Mrs Smith or Mrs Docherty.

The Rumbalara Energy Visit

When Michelle and Sharon came from Rumbalara no one knew or even expected it! It was a great surprise. Not only did they come but also three Wyong High School students named Olivia, Nathan and Tay came to work with us.

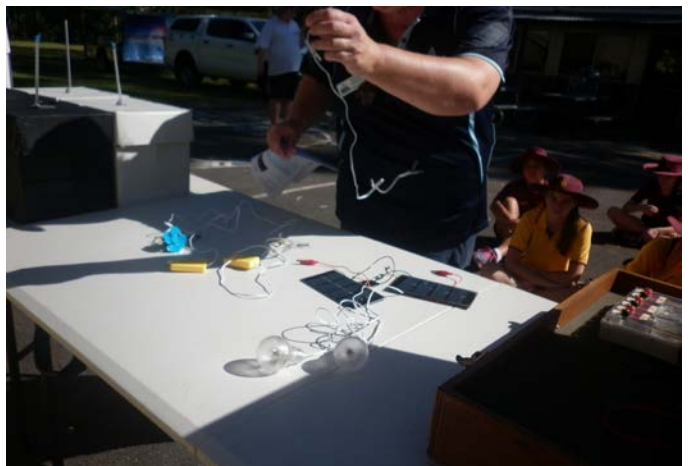
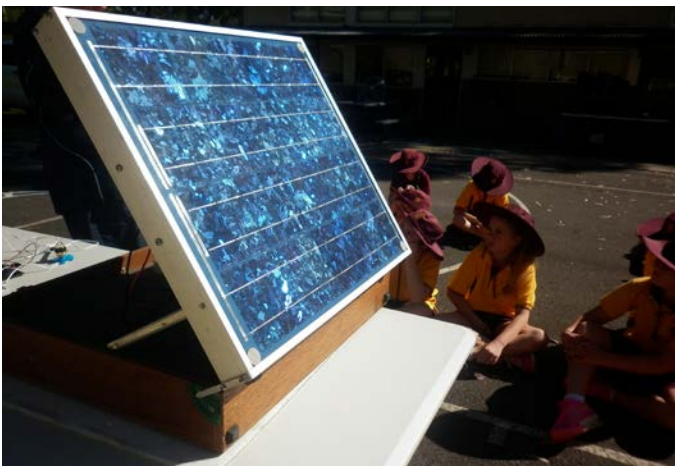
With Michelle we rotated around five activities. We did the lemon powered battery and used a meter to measure the power created using various types of metal conductors. We rode a stationary bike to generate power that made different types of lights turn on at different power levels. We explored different things with a solar powered oven, small solar panels to run a light, buzzer and fan and compared solar energy on insulated and non-insulated "houses". We tried to use magnets and copper wire to create power. The fifth activity was to see what sized fan would create the most wind power.

With Sharon we were calculating how much carbon dioxide a tree can process to make our air clean and useable. We did this by measuring the tree 130cm up from the ground and then its diameter. On the ipads Sharon had a spreadsheet system where you just type the answer in to a purple box from the width that you measured. We thought this was really fun and everyone seemed to enjoy themselves.

By Lilly and James



RUMBALARA ENERGY TRAILER



P&C NEWS

Election Day BBQ

The P&C are running a BBQ at the school this Saturday for Election Day Voting (8am till sold out).

Does anyone in the community have spare eggs, any meat products or access to cheap or free bread?? We would appreciate a donation if you do.

We are also looking for people to help man the BBQ or Cake Stall for a few hours. Many hands make light work! Please contact BBQ Coordinator, Michael Kay on 0447 334 220.

Thank you all for your support. Every cent of the proceeds goes to support the whole school community.

130 years Celebration

It has been decided that for the school's 130 Years Celebration we will hold a school fete / family day in the school grounds on Saturday 21st September (TBC). We are calling upon anyone in our community that may wish to be a part of the day by: helping with the organisation of the event, if you have a business or hobby and would like to hold a stall on the day, to contact Tiana or the school. Lots more details and information to come so watch this space.

Hot Cross Buns

This year we will be doing the Bakers Delight Hot Cross Bun fundraiser again. Buy your delicious hot cross buns for Easter and help raise funds for the school at the same time. Please keep an eye out for further details.

P&C Board

We will be updating the P&C board under the cola area with what is happening and a suggestions area for parents to voice anything they would like the P&C to help with. Please check this notice board regularly for upcoming events and projects.

Thompson's Pie Drive

The Thompson Pie Drive orders will be delivered early this Friday 22nd March.

Can anyone who ordered start considering how they will pick them up (they should be available before school) and confirmation of exact time will be sent to each person.



JILLIBY JEWEL AWARDS

TERM 3 WEEK 6 & TERM 3 WEEK 7		
AWARD	NAME	YEAR
Topaz	Lilly A	5



ASSEMBLY AWARD RECIPIENTS

TERM 1, WEEK 6 & 7		
K/1	Malachi	Noah
	Kalani	Zac
2/3/4	Rylan	Ilisha
	Kodi-Lee	Alex T
	Jack	Grace
4/5/6	Hailey	Lawrence
	Leilani	Maddison
	Kyan	Lilly A



Election Day Cake stall and BBQ 23rd March 2019 ***Saturday 8am – 2pm***

Jilliby PS P&C need your support.

This week we would appreciate it if you, your children and family bake something. It can be anything cakes, cupcakes, slices, brownies, cheesecake, biscuits, tarts, etc. Anything that you love to make and eat. Then we would like you to bring it to school on Friday afternoon when you pick up your children or bring it on election day to the cake stall we will have set up. There are labels, trays and bags in the office that you can use, or just bring your cakes along and we will bag them for you. Everything needs to be labelled with **all ingredients** so that we know what is in it, the labels are in the office or tell us when you bring it and we will write it out for you.

Then we would love you to bring family and friends to vote at Jilliby PS or just drop in to support the fundraising we are doing. There will be a **BBQ** and the **cake stall**. Last election day our BBQ received rave reviews from all our customers. Michael is a seasoned BBQ king who would love you to come along and try his food and if you can spare some time help him out on the day.

All money raised goes back to the students in support of the schools wish list and annual events. This year so far the P&C is contributing towards the costs of STEM and robotic equipment for every student in the school. The Welcome BBQ, Grandparents Day, Mothers and Fathers day are all funded and supported by the P&C with both their time and/or money.

Please pick up what you need from the office and deliver your goods to the canteen on **Friday 22nd March (between 2:45-3:15pm)** or bring direct to the stall on **Saturday morning**. Please make sure that you put a label on the container indicating all the ingredients and if you need anything returned it is best to put your name on it and it will be in the office for you to collect.

This is a fundraising event.

We also need **volunteers for the cake stall and BBQ**. The cake stall will operate from 8am until all cakes are sold or 2pm, which ever happens first.

So if you can spare an hour or more when you come to vote please send an email (susan8132@gmail.com) or leave a note at the office indicating times and we will put a roster together. Or just stop by for a chat and if possible give a bit of help where needed.

Please come along and help raise money for our school.

So if you are available during **8am – 2pm** on the **23rd March** to help the P&C raise some money we would appreciate it. If you don't have time then come and buy some of our yummy products or donate some food for us to sell on the day.

Thanks
Susan

